

About Yahe

Yahe - Yet Another HTML Editor.

There really doesn't need to be another HTML editor except that:

**I wasn't
pleased
with the
other
editors I've
seen.
I
thought
I could
do a
better
job.
I'm a
Programmer.**

So anyway, this is Yahe.

Writing Yahe was a challenge to learn about HTML and to build a better mousetrap. I hope you'll like the clean interface to Yahe. Yahe was developed using [Delphi 1.0 from Borland](#). The Help Files were created using [ForeHelp Demo Version 2.1.1](#)

Yahe is a 16 bit application. It will work on any Windows 3.1, Windows NT, or Windows 95 computer.

This is a [CareWare](#) program. \$5.00 of each version registered will be donated to the Special Olympics.

This program is copyrighted 1996 by James Roberts.

[Contents](#)



Contents

Welcome To Yahe **Yet Another HTML Editor.**



[About Yahe](#)

[Creating New HTML Files](#)

[Editing Files](#)

[Inserting HTML Codes](#)

[Registration](#)

[ToolBar Buttons](#)

[Viewers.](#)

Creating New HTML Files

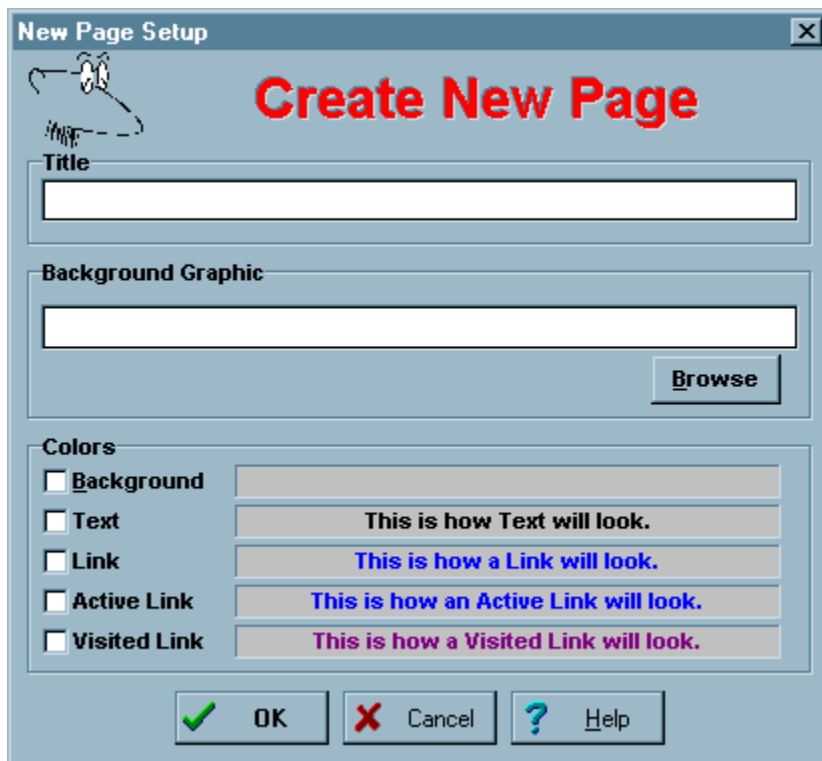
Selecting the File/New menu item or clicking on the New Toolbar Icon will display the Create New Page dialog.

Enter the title of the Page as you wish it to appear in the browser. Normally the title is displayed by the browser in the top caption bar of the browser. It is also used when your page is saved as a bookmark so use a descriptive title.

You may choose a background image by typing the path to the graphic or use the browse button to display the file dialog box.

You may declare colors for the different parts of the page. Click the Check box beside each of the color fields to include the appropriate fields. You may change the colors by clicking in the display area beside each field. The display area will change to the chosen color.

Click OK when your ready to create the new page, or click Cancel to abandon the creation of a new page



[Contents](#)

Tools

I can recommend the following tools used to build Yahe.

Delphi 1.0 Windows Programming Environment.

An excellent developing environment for windows programming. I'm continually amazed at the elegance of the object oriented environment.

Borland International, Inc.
100 Borland Way
P.O Box 660001
Scotts Valley, CA 95067-0001

ForeHelp 2.1.1 Demo Version

The best what you see is what you get help authoring system that I've found. And I'm only using the Demo version.

ForeFront Inc.
5171 Eldorado Springs Drive, Boulder, CO 80303
Phone: (800) 357-8507 or (303) 499-9181 FAX: (303) 494-5446

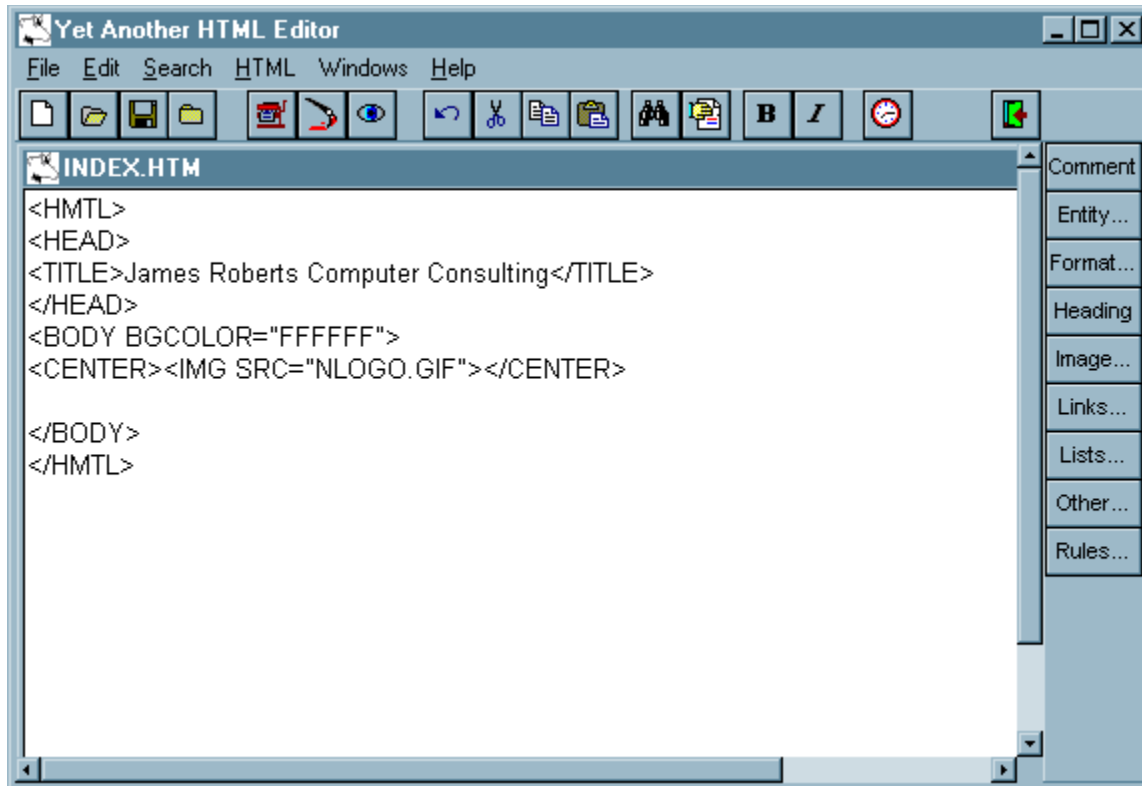
Delphi Developer's Guide

The best book I've found on creating Delphi Applications. Continually finding the answers to my questions between the pages.

by Xavier Pacheco & Steve Teixeira
Sams Publishing
201 West 103rd Street
Indianapolis, Indiana 46290

Editing Files

YAHE uses the MDI Interface (Multiple Document). More than one HTML source file may be open at a time. Each Edit window displays the HTML enhanced text for that particular page.



The standard windows cut, copy and paste keystrokes are available for each edit window. Clicking the right mouse button will display a pop up menu that will also give you access to editing commands. Or you can use the toolbar and menu items.

To insert an HTML edit code in the document, place the cursor (the I-Beam) where you want the code to be entered. Then click the desired HTML code button on the right side of the page. You can also use the HTML menu. Fill in the dialog, and press OK. The results of the dialog will be placed at the current cursor location.

[Contents](#)

Inserting HTML Codes

If you really into it, you can just type in your HTML codes and your text directly into the edit window. Or you can use the HTML buttons at the right side of YAHE's window to bring up dialog boxes for all sorts of HTML codes.

HTML	Descriptions
buttons	



Comments: The comments box just wraps the currently high lighted text. Only one without a dialog!

Entity: Dialog that displays all of the special characters codes that can be embedded in your text

Format: Dialog that displays all your choices for formating text. Bold, Paragraphs, Address are just of few of the available form codes. The currently high-lighted text will be inserted between the beginning and ending format marks.

Heading: Dialog box that allows you define text as a heading of any of the 6 levels. The heading can also be centered.

Image: Dialog box for proper alignment and placement of a image to be displayed on your page.

Links: Dialog box to define internal and external links for your page. This is the hypertext part of HTML and the browsers.

Lists: Dialog box for entering the different types of lists, UL - Unorderd List, OL - Ordered List, DIR - Directory List, Menu - menu list, DL Definition list.

Other: Dialog of other things you can insert. While most HTML codes have a beginning and ending code, these don't.

Rules: Horizontal lines to be drawn across the page. You can define the height width and location of these lines.

You should make sure that the cursor is where you want it to be before inserting HTML codes. Except for the <ISINDEX> HTML code all coding should go between the <BODY> </BODY> HTML Codes.

Contents

Registration

YAHE - Yet Another HTML Editor is CareWare. You are allowed 30 days to use the program free of charge in order to evaluate and decide if it has use for you. At the end of 30 days you are required to purchase a registered copy of **YAHE**. CareWare is shareware. \$5.00 from each copy purchased will be donated to the Special Olympics.

To register please send \$25.00 (US) per copy in check or money order to:

James Roberts
1340 Greenridge Avenue
Algonquin, Il. 60102

The author can be contacted electronically at: jroberts@interaccess.com

The author of **YAHE** reserves the right to change any information, policies or pricing without prior notice.

Order Form For YAHE

Please send _____ copies of the latest version of **YAHE** to:

NAME: _____

COMPANY: _____

ADDRESS: _____

CITY,ST: _____


















POSTAL: _____

Total amount: _____ copies at \$25.00(US) = _____

Illinois residents please add sales tax.

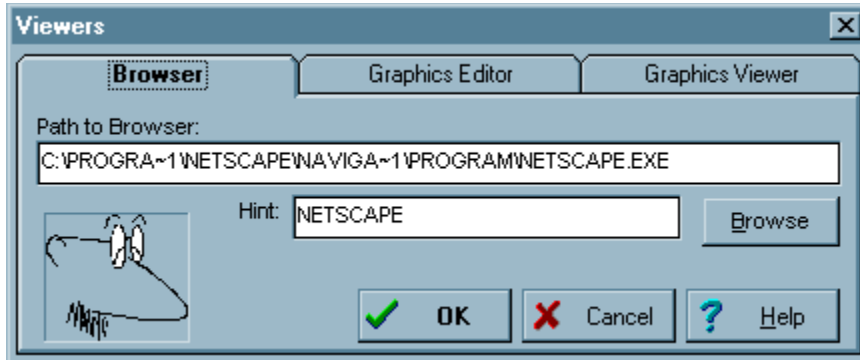
ToolBar Buttons

The tool bar across the top of the Yahe window gives you shortcuts to many of Yahe's functions. Pausing the mouse on top of any of the Icons will display a hint to the use of the icon. While the tool bar hangs around all the time, most of the buttons require an active Edit window.

Tool Bar Icon	Menu Equivalent	Description
	File/New	Create a new HTML file. The <u>New Page</u> dialog will display
	File/Open	Open an existing HTML file.
	File/Save	Save the current edit file. If the file has not been previously saved the Save As dialog box is displayed.
	File/Close	Close the current edit file. If the file has changed you will be prompted if you want to save the changes.
	File/Test ^ T	Test the HTML code with the assigned <u>Browser</u> .
	File/Graphic Editor	Launch the assigned <u>Graphics Editor</u> .
	File/Viewer	Launch the assigned <u>Viewer</u>
	Edit/Undo ^Z	Undo last edit.
	Edit/Cut ^X	Cut selected text to the clipboard.
	Edit/Copy ^C	Coppy selected text to the clipboard.
	Edit/Paste ^V	Paste current clipboard text to the document at the current cursor position
	Search/Find	Find text in the current document.
	Search/Replace	Replace text in the document.
		Mark selected text as bold.
		Mark selected text as italic.
		Insert time date into document at current cursor position.
	File/Exit ^Q	Close all windows and exit YAHE.

Viewers.

To really see what your source code looks like you need to be able to see it in action. While most HTML editors allow you to define and launch a Web Browser, YAHE goes one, well two steps further. From within YAHE you can also define a Graphics Editor and a Graphics Viewer. High-light a graphics file name in your HTML source code then choose the File/Graphics Editor menu item or click on the Graphics Viewer Tool Button. Your Graphics Editor will be launched and you can modify your gifs without losing your place in YAHE. So the big question is why is there a graphics viewer and editor? Because my Editor doesn't allow transparent backgrounds on Gifs but my viewer will.



Browser - Enter the path to your network browser.

Graphics Editor. Enter the path to your Graphics Editor.

Graphics Viewer. Enter the path to your Graphics Viewer.

Each of the tabs on the Viewers dialog has a Hint Field. The text in this field is displayed when ever the mouse button pauses over the appropriate Tool Button. The browse button will help you find your programs.

[Contents](#)

